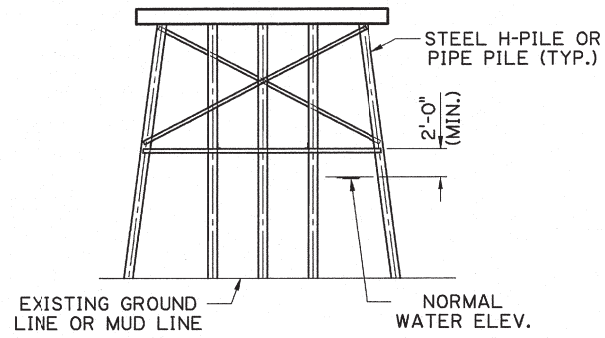
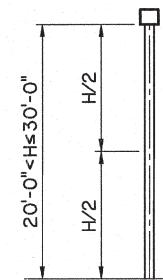
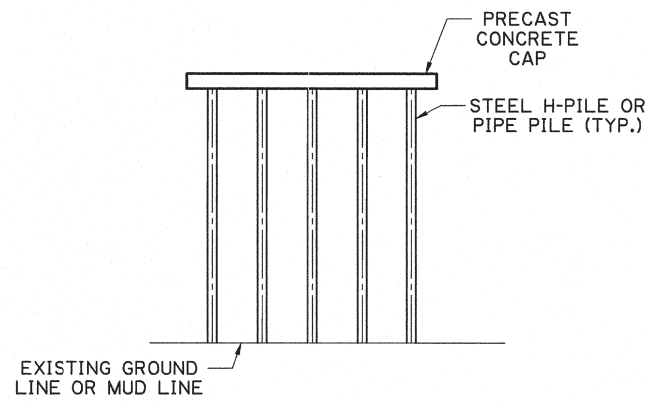
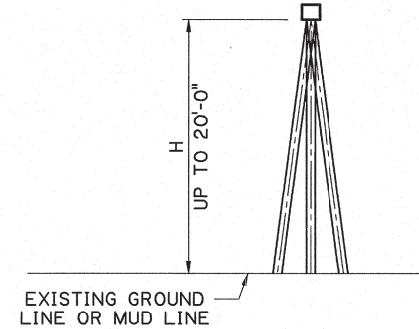


CASE 1 *
(SINGLE ROW BENT)

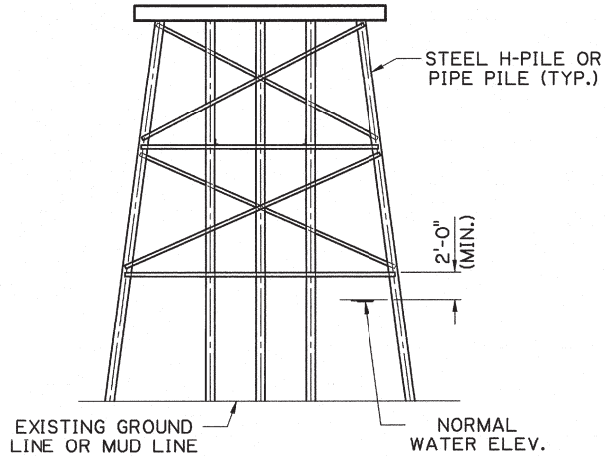
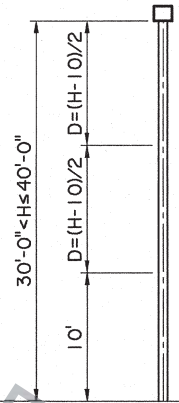
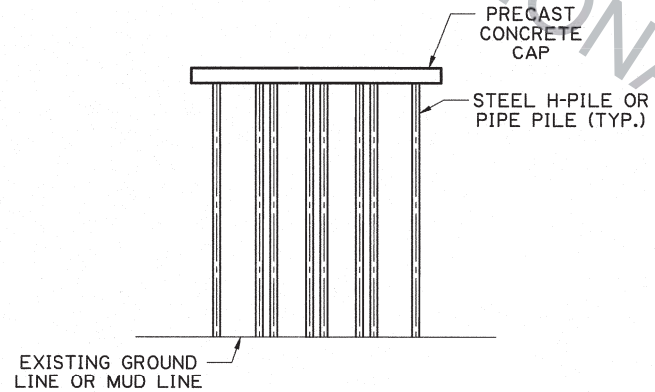


CASE 3

* FOR BENT CASES 1 AND 2 BATTER EXTERIOR PILES 1/2 ON 12 WHEN "H" > 12'-0"



CASE 2 *
(ANCHOR BENT)



CASE 4

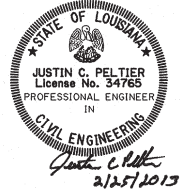
NOTES:

THE PURPOSE OF THE TWO FEET MINIMUM CLEARANCE ABOVE THE NORMAL WATER LEVEL IS TO ALLOW THE PASSAGE OF DEBRIS UNDERNEATH THE HORIZONTAL AND SWAY BRACING. IN THE EVENT OF A FLOOD, THE WATER LEVEL MAY RISE ABOVE THE LOWEST MEMBER OF THE HORIZONTAL AND SWAY BRACING.

IF THE EXISTING WATER LEVEL ELEVATION CONFLICTS WITH THE SELECTED BRACING ALTERNATE, THEN THE CONTRACTOR MAY PROPOSE REVISIONS TO THE BRACING AND PILE MEMBERS TO THE BRIDGE ENGINEER FOR REVIEW.

"H" DOES NOT INCLUDE THE DEPTH OF SCOUR.

BENT CASE	PILE LOADS		
	LOAD (TONS)		
	SERVICE		STRENGTH (COMPRESSION)
PERMANENT LOAD	TRANSIENT LOAD		
1	9	16	38
2	6	33	65
3	9	16	38
4	9	16	38



FOR INFORMATIONAL PURPOSES ONLY

SHEET NUMBER		PARISH	CONTROL SECTION	STATE PROJECT	
DESIGNED	J. PELTIER	CHECKED	M. HEBERT	REVIEWED	P. VAUGHT
DATE		NO.	DATE	NO.	DATE
REVISION OR CHANGE ORDER DESCRIPTION					
BY					
SERIES # 3 OF 16					
BRIDGE & STRUCTURAL DESIGN					